



Association of
Professional
Landscape
Designers
California Chapter

JANUARY / FEBRUARY 2016



Can you name these APLD leaders?
Answers start on page 3.

In this issue . . .

Learn about your APLD CA Chapter and District leaders

Meet professional members new to APLD CA

Find out what other APLD CA designers have been up to

Read an interview with one of APLD CA's Gold Sponsors



MEET THE 2016 APLD CALIFORNIA CHAPTER BOARD OF DIRECTORS

2016 Executive Committee



Mary Fisher, APLD

President

Mary Fisher Garden Design

president@apldca.org

"My favorite thing about APLD is that my involvement with the organization has propelled my career in landscape design in ways that would never happen on my own."

The President keeps the Mission and Goals of APLD present in Chapter meetings and discussions. Appoints Committee Chairs and solicits updates from them as well as from Board members. The President is a member of the Executive Committee.



Linda Middleton, APLD

President Elect 2017

Terralinda Design

presidentelect@apldca.org

"What I love about APLD is that it is easy to stay current with the demands of our profession through all the program and event offerings held locally, statewide, and nationally. The social and professional

connections that come by actively participating in APLD are the icing on the cake!"

The President Elect performs functions of the President when the President is unavailable. Acts as liaison with other organizations and affiliated groups, to further the mission of APLD CA.



Francesca Corra

Vice President

Dirt Diva Designs

vicepresident@apldca.org

"The generosity of spirit in this profession of ours continues to amaze me. It is a bottomless well of support and advice that allows me to grow and challenges me to be the best designer I can be."

The Vice President performs functions of the President Elect as when the President Elect is unavailable. Assists the President and President Elect in setting and Implementing goals for the Chapter for the next three years. The Vice President is a member of the Executive Committee.



Cathy Edger

Secretary

Edger Landscape Design

secretary@apldca.org

"I love being associated with a group of fellow professionals who actively seek to upgrade their skills and knowledge through a variety of events. Over the years participation in APLD events has enriched my designs and benefitted my clients!"

The Secretary records minutes of Board meetings and maintains an archive of Chapter Minutes and Agendas. The Secretary chairs the Board meetings when the President and Vice President are absent. The Secretary is a member of the Executive Committee.



Ramie Allard

Treasurer

Blue Door Garden Design, Inc.

treasurer@apldca.org

"My favorite thing about APLD is my fellow designers. They are bright, artistic and fun to be around."

The Treasurer keeps financial and banking records. The Treasurer presents yearly budgets and quarterly financial reports at Board meetings and provides reports to APLD and Districts as required. The Treasurer is a member of the Executive Committee.



Amelia B. Lima, APLD

Advocacy Chair

legislative@apldca.org

"My favorite aspect about APLD is the way the organization keeps me and all its members current with the new trends in the landscape design profession."

The Advocacy Chair advocates on behalf of APLD CA and related professions in the landscape design industry. The Chair sets strategy and the agenda for statewide APLD CA advocacy, and works with APLD CA Districts to advocate locally for our members and the environment. The Advocacy Chair is a member of the Executive Committee.

Chapter Committee Chairpersons

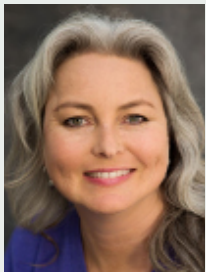


Tracey Grillo
Membership Chair
Botaniscapes by Tracey
membership@apldca.org

"My favorite thing about APLD is the camaraderie and friendship that runs throughout our membership. I find that you can walk into a room full of members anywhere and find the same sense of

shared professionalism, integrity and generosity of knowledge."

The Membership Chair coordinates statewide efforts for member retention and new member attraction. The Chair provides monthly membership data to Board and District Membership Chairs.



Laura Morton, APLD
Sponsorship Chair
Laura Morton Design
sponsorship@apldca.org

"Without APLD I am just working. With APLD, I am connected. This association offers an opportunity to be more deeply involved with the design profession, staying current with changes at the state

level as well as getting to hang out with some of the most brilliant and fun landscape designers in California."

The Sponsorship Chair organizes the annual sponsorship campaign, which is the primary source of income for the Chapter. The Chair works with District Sponsorship Chairs to implement benefits at a local and state level.



Lori Palmquist
Technology Chair
technology@apldca.org

"My favorite thing about APLD is that I am so inspired and energized by my APLD buddies, and get to enjoy the feeling of being a part of something large and marvelous."

The Technology Chair coordinates and oversees maintenance and updates of the chapter website, blog, calendar, and "Find a Designer" profiles.

LEARN MORE ABOUT THE
APLD CALIFORNIA CHAPTER BOARD
AT OUR WEBSITE

www.apldca.org

Getting Organized in San Diego

The APLD California Chapter Board of Directors recently had their first meeting of the year down in San Diego. We started the night before with a festive event hosted by our long-time sponsors, Hunter/FX Luminaire. About forty-five APLD members from all over the state enjoyed a lovely dinner and drinks at Stone Brewing World Bistro and Gardens and then were dazzled by a presentation of all of the latest and greatest FX Luminaire products. The next day, twenty-four of your local District and Chapter Board members spent all day brainstorming ways to elevate the brand of APLD across California and ways we can make being a volunteer a little easier. We left with many ideas on how we can continue to refine our organization and help all our members make the very most of their membership. —Mary Fisher, APLD

ANSWERS:

Can you name these APLD Leaders?

(A key to the photos on the cover)



DISTRICT COUNCIL MEMBERS

The President of each District, or a representative of the District, sits on the Chapter Board of Directors as that District's representative. District Representatives may hold Officer positions and may serve as Committee Chairs. District Representatives act as liaison of their respective Districts and communicate Chapter news with their District members. Each member of the District Council is a voting member of the Board of Directors.

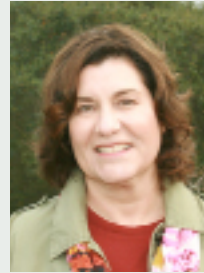


Jacky Surber

Greater Los Angeles District
President

LADistrict@apldca.org

"My favorite aspect of being a part of APLD is learning the insider tricks from all the creative members."



Linda Middleton, APLD

Bay Area District President

BAdistrict@apldca.org

"What I love about APLD is that it is easy to stay current with the demands of our profession through all the program offerings held locally, statewide, and nationally. The social and professional connections that come by actively participating in APLD are icing on the cake!"



Kimberley Alexander

San Diego District President

SDDistrict@apldca.org

"My favorite thing about APLD is how much I learn and grow from interacting with my fellow designers."



Martin Carrion van Rijn

Sacramento District President

SACDistrict@apldca.org

"Volunteering for APLD, I find I have become a better professional. I meet and work with great colleagues to improve myself and landscape practices. It is a win-win situation."

CONTRACT STAFF



Maureen Decombe

Administrative &
Communications Coordinator

maureen@apldca.org

"It's been exciting and rewarding to see how the APLD California Chapter has grown, endured, and matured over many years. APLD is a vital link for California landscape designers in professional

practice, and a leader in establishing a new approach to landscapes that are beautiful inside and out."

Administrative & Communications Coordinator

Coordinates newsletter production with the Graphics Coordinator. Supports all levels of the organization to ensure successful implementation of programs and mission.



Diane Goldsmith

Graphics Coordinator

"The other designers who are members of APLD have been an inspiration to me. I have learned so much from the company of such a talented and generous group of people."

Graphics Coordinator Assists communication chairs in the Districts with templates for programs and other timely announcements, designs the bi-monthly Chapter newsletter.

For complete APLD CA Chapter and District contact listings, [visit our contact page](#)

A Letter from the 2015-2016 APLD Chapter Board of Directors

APLD California Chapter and District leaders gathered in January in the heart of the **San Diego District** to set the tone for 2016, share program and event information, and plan for future organizational development. As we look forward to another great year of growth, let us share with you a few highlights of 2015—a watershed year—even in this time of unprecedented drought and deluge.

This summer, we celebrated the creation of a powerful new **Bay Area District**. Leaders from our Peninsula, East Bay, North Bay, and San Francisco Districts all came together to form one administrative umbrella. We are strong and diverse, with four regional districts throughout the state: Bay Area, Greater Los Angeles, Sacramento, and San Diego.

Throughout the year in 2015, each of our districts participated in high-profile garden shows like **Dwell on Design**, the **San Francisco Flower and Garden Show**, and the **San Diego Home/Garden Show**, where we provided residential property owners with one-on-one design consultations. These short consultations provide a valuable resource of design advice and product referral for home gardeners who might not otherwise gain access to professional planting design and layout advice. We are committed and influential sources of design advice for all gardens, and know that every landscape matters, no matter how small.

Our organization and individual members deepened relationships with policy-makers and agencies at a two-day Advocacy Summit hosted by the **Sacramento District**. There, together with the **Surfrider Foundation** and the **California Urban Water Conservation Council**, we presented the ‘Watershed Approach to California Landscapes.’ We are engaged and impactful, and intend to be active stakeholders in our relationships with local agencies.

The northern districts partnered with **Pacific Horticulture** to offer an outstanding seminar, *“Defining a New Northern California Landscape.”* Our southern

districts supported and sponsored the *“Urban Soil, Carbon, Water Summit”* at the **Los Angeles Natural History Museum**, in partnership with **G3, Green Gardens Group** (a new APLD CA Gold Sponsor). At both events, renowned speakers addressed the many ways we can respond to drought through an expansive approach that:

- improves the ability of our soils to store water and increase habitat diversity
- drives a new aesthetic of designed landscapes and gardens that are both beautiful and practical—from the ground up and from the roof down
- develops in our clients an appreciation of low-water plants and nature in garden design

Active sponsor participation at our local and regional events has led to many mutually beneficial networking opportunities. These valued relationships help fund educational programming and advocacy for a strong future for our profession. In return, we offer exposure for APLD California Chapter Sponsors to an energized and deeply committed group of professional landscape designers. We are reliable partners and friends.

Recently, our expanded outreach and Social Media efforts included a well-attended interactive webinar, produced by the **Greater Los Angeles District**. Look for our next presentation later this spring, and in the meantime, keep an eye out for us at the **San Francisco Flower & Garden Show** on March 16–20, 2016.

We are energetic and eager to explore new opportunities in the coming year. Do you have an idea? Contact us today.

With sincere appreciation for your support,

The APLD California Chapter
2015-2016 Board of Directors

We are APLD. We define landscape design.
www.apldca.org

Welcome New Members

We are happy to welcome these new Professional Members.
Thank you for joining the APLD California Chapter.



Amy Griffiths

New Leaf Garden Design, based in Castro Valley, California. Amy specializes in sustainable gardens customized to each site's unique climate and soils. Originally from Oregon, Amy has been designing and maintaining gardens in the Bay Area since 2004.

newleafgardendesign.com



Nancy L. Curtis

NLC, Natural Landscapes for California, is based in Saratoga, California. Nancy focuses on landscape design solutions dedicated to water conservation, restoring local plant & wildlife ecology and long term sustainable gardening.

www.nlclandscape.com



Vladimir Berzunza

V3 Studio Berzunza, in Orange, California, is a multidisciplinary design firm that specializes in finding innovative ways to blend the natural environment with modern outdoor living.

studioberzunza.com



Bernardo Lopez



Bernardo Lopez Garden Design, is based in Berkeley, California. It is a design-build firm that prides itself on creating well-crafted, beautiful and sustainable gardens. We listen, look and interpret. We are committed to creating outdoor spaces that are specific to our client's needs, desire, and budget.

lopezgardendesign.com

BERNARDO LOPEZ
GARDEN DESIGN
and **INSTALLATION**

MAKING THE MOST OF YOUR MEMBERSHIP

Did you know that as a current member of APLD you are entitled to a free APLD produced webinar each year? The APLD Education Committee is making plans to hold six webinars as part of the 2016 APLD Webinar Series. Mark your calendar for the following webinars, and watch your email for more details.

- **February 18** / Photography for Landscape Designers, Allan Mandell
- **April** (date TBD) / A Tour of the New York Botanical Garden, Sheila Brady
- **June 8** / Designing Plant Communities for More Resilient Landscapes, Thomas Rainer
- **August 31** / Alternative Laws, Douglas Owens-Pike
- **October** (date TBD) / Selling Your Designs, Colleen Hamilton, APLD
- **December** (date TBD) / Designer of the Year (to be determined)

GET THE FAQs on CEUs: [Click here for news from APLD about CEUs and Membership Categories](#)

Learn Tips for Taking Your Best Design Photos at APLD's Webinar: Feb. 18, 2 - 3 p.m. Eastern

Join APLD Thursday, Feb. 18, from 2 to 3 p.m. Eastern Time for its first webinar of the new year, ***Photography for Landscape Designers: In the Field, In the Darkroom and In the World***. Featured speaker Allan Mandell, a professional garden photographer, will address the following:

- 1. In the Field:** Photographic composition tips that will help in documenting your own – and others' – design work.
- 2. In the Darkroom:** File preparation and file management to help you stay organized.
- 3. In the World:** Ideas and strategies for using and publishing your images.

To illustrate his points, Allan will show images he has taken from gardens in North America and Japan. There will be time for questions and answers.

The cost for both the live and recorded presentation is \$50 for members and \$100 for nonmembers. The recorded presentation is \$25 for members and \$50 for nonmembers. **1 CEU.** [Click here](#) for more information. [Register here](#).

About the speaker: Allan Mandell began his career as a professional garden photographer in Portland, Ore., following a year-long photographic self-assignment shooting in Kyoto, Japan, through the four seasons. For more than 20 years, his work has been published internationally in magazines and books, including six books as sole photographer. Allan continues to publish his images and for the past few years has been leading cultural arts tours back to the source of his inspiration, the gardens in Kyoto. Allan lives in Victoria British Columbia, Canada.





Association of
Professional
Landscape
Designers
California Chapter

Gold Sponsors

Announcing our 2016 Sponsors

New Gold Sponsors include:
San Marcos Growers, SPJ Lighting, and G3, Green Gardens Group



Please click on the logos to learn more...

Silver Sponsors

Welcome back, APLD CA 2016 Sponsors!
Click on the logos to learn more...



Bronze Sponsors

click on the name to learn more...

**Bourget Bros.
Building Materials**

Monrovia

Calstone

Nature Designs

Gro-Power

**Sunset Western
Garden Collection**

Mapmaking Systems

Sincere thanks to all of our returning
2016 APLD CA Sponsors.

Together, we are Market Strong



A Message from Laura

The California Chapter enjoys the support of many loyal businesses returning for 2016 and we thank them for their continued partnership.

Year after year, familiar industry leaders are woven into our events and programs throughout the state. It's a strong, mutually beneficial connection.

For our membership, sponsorship constitutes valuable education, aid for our advocacy efforts and the financial foundation for our many initiatives.

In return, we represent a targeted audience of energized, professional landscape designers for their products & services.

So, as you interact at events and do business this year with our valued sponsors, please remember to tell them you are an APLD member and thank them for their support.

Laura Morton, APLD

APLD California Chapter Sponsorship Chair

sponsorship@apldca.org

By sponsoring the
APLD California Chapter
at any level, your organization will
reach hundreds of landscape designers
who make specification decisions and
recommend services to local clients
every day.

Increase your regional name recognition
with California designers, design
students, allied professionals, and
potential clients. See our website at
www.apldca.org

GREATER LOS ANGELES DISTRICT BOARD



Jacky Surber
President

"My favorite aspect of being a part of APLD is learning the insider tricks from all the creative members."



Suzanne Baird
Sponsorship & Advocacy Chair

"My favorite thing about APLD is the comradery and willingness of our members to share their expertise and experiences with one another. I am constantly inspired by the many talented and knowledgeable designers I have met through APLD and enjoy the great variety of lectures and programs it hosts."



Francesca Corra
Immediate Past President

"The generosity of spirit in this profession of ours continues to amaze me. It is a bottomless well of support and advice that allows me to grow, and challenges me to be the best designer I can be."



Katie Cool
Communications Officer

"My favorite thing about the APLD is the incredible talent of the members and their dedication to creating beautiful and thoughtful designs that benefit our environment."



Julie Molinare
Vice President/Treasurer

"My favorite thing about APLD is the camaraderie and with it all the amazing knowledge that the members of APLD are so willing to share with each other."



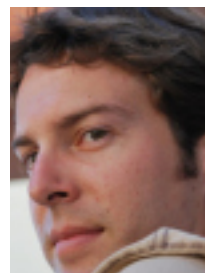
Debbie Gliksmann
Advocacy Co-Chair

"My favorite thing about APLD is the amazing amount that I learn from the educational seminars and talking with my fellow designers."



Jackie Scheidlinger
Secretary

"My favorite thing about APLD is the generosity of my fellow members in sharing their news, information, contacts, and helpful advice."



Edoardo Taroni
Member at Large



Johanna Woolcott
Membership Chair

"What I love about APLD is the connection with other designers!"



Linda Rose Levine
Member at Large

"My favorite part of APLD is the comradery, no competition, and all are very helpful to every member."



Linda McKendry
Member at Large

"My favorite thing about APLD is the people. Being associated with a great group of professional designers facilitates my creative and personal growth."



Arleen Ferrara
Member at Large



Laura Morton, APLD
Member at Large

"Without APLD I am just working. With APLD I am connected. This association offers an opportunity to be more deeply involved with the design profession, staying current with changes at the state level as well as getting to hang out with some of the most brilliant and fun

landscape designers in California."

BAY AREA DISTRICT BOARD



Linda Middleton, APLD

"What I love about APLD is that it is easy to stay current with the demands of our profession through all the program and event offerings held locally, statewide, and nationally. The social and professional connections that come by actively participating in APLD are the icing on the cake!"



Tina Roushall
Secretary

"APLD helps me do my job better. There's a support team behind APLD (fellow designers, sponsors, associates) I know I can reach out to whether it be for business advise, (new) plant information, new materials, trends, inspiration, comradery, or growing my skillsets."



Janet Enright
Vice President

"My favorite thing about APLD is that I'm part of a community who invests our time in making our profession and our world better for all."



Mary Fisher, APLD
Sponsorship Chair (acting)

"My favorite thing about APLD is that my involvement with the organization has propelled my career in landscape design in ways that would never happen on my own."



Lee Mangus
Treasurer

"My favorite thing about APLD is the connection to a talented, dedicated, passionate and fun group of people."



Elisa Baier
Program Co-Chair

"My favorite thing about APLD is learning from the other talented, thoughtful, creative and generous members!"

(Bay Area listing continues on p. 12)

BAY AREA DISTRICT BOARD (Continued)



Patricia St. John, APLD
Program Co-Chair

"My favorite thing about APLD is the chance to meet with other designers and share ideas, resources and mutual support."



Anna Wendorf
Trade Show Coordinator

"My favorite thing about APLD is how it validates and uplifts our profession by promoting landscape design as an important influence on not only individual gardens, but the changing landscapes of California."



Diane Goldsmith
Communications

"The other designers who are members of APLD have been an inspiration to me. I have learned so much from the company of such a talented and generous people."



Dina Blackwell
Member at Large
(Representative for East Bay)



Cathy Edger
Advocacy Chair

"I love being associated with a group of fellow professionals who actively seek to upgrade their skills and knowledge through a variety of events. Over the years participation in APLD events has enriched my designs and benefitted my clients!"



Marcy Lotti
Member at Large (Representative
for South Bay/Peninsula)

"My favorite thing about APLD is that it gives me the opportunity to impact continuing education in a field that fuels my passion."



Katie Creighton
Membership
Co-Chair

"Great people, great opportunities to learn, great support for the profession!"



Jeannie Fitch
Graphics Support

"My favorite thing about APLD is the PEOPLE—amazingly talented, smart and inspiring. I love the community of sharing, mentoring, problem-solving and support. The sharing of design methods, plant palettes and business practices. I love that I can keep learning through APLD, growing and becoming a better designer and a better steward of the earth."

(not pictured)

Nann White
Membership Co-Chair

"My favorite thing about APLD is going to events and being in the company of fellow designers who appreciate and want to learn more about plants, gardens, and design."

SACRAMENTO DISTRICT BOARD

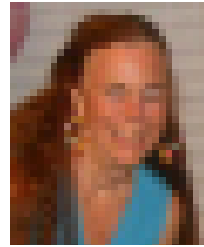


Martin Carrion van Rijn

President

SACDistrict@apldca.org

"Volunteering for APLD, I find I have become a better professional. I meet and work with great colleagues to improve myself and landscape practices. It is a win-win situation."



Mary-Lee Gilliland

Sponsorship Chair

"My favorite thing about APLD is meeting others in this profession from whom I have learned much and with whom we are all learning more!"



Tina Henrickson

Vice President

Vice President/President-Elect

"My favorite thing about APLD is the opportunity to learn and better myself as a landscape designer through the many educational programs and events that are available."



Gary Kernick

Events (Programs) Chair

"My favorite thing about APLD is gaining creative inspiration from other members."



Marti Meyer

Immediate Past President & Secretary

"My favorite thing about APLD is knowing we are helping heal a world in need of loving environmental stewardship and having opportunities of camaraderie with like-minded sustainable landscape professionals."



Hope Nelson

Communications Chair

"My favorite things about APLD are the networking and educational opportunities."



Bernadette Balics

Treasurer

"My favorite thing about APLD is the camaraderie I feel while developing our professional skills and defending our right to practice."



Aimee Hendrie

Membership Chair

Thank you to all APLD California Chapter and District Leaders
You are APLD in California

SAN DIEGO DISTRICT BOARD



Kimberly Alexander

President

SDDistrict@aplca.org

"My favorite thing about APLD is how much I learn and grow from interacting with my fellow designers."



Marilyn Guidroz, APLD

Treasurer

"My favorite thing about APLD is the fellowship with other professionals and like-minded designers that makes you feel like you belong wherever you may be."



David Clarke

Vice President

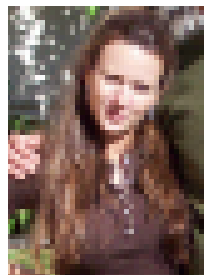
"My favorite thing about APLD is that I am involved with a wonderful group of people passionate about landscape design. Being a member of APLD renews daily my appreciation of this profession and the many ways it helps our built environment."



Lisa Bellora

Past President & Programs Chair

"My favorite thing about APLD is being connected to other like-minded professionals."



Tracey Grillo

Membership Chair

"My favorite thing about APLD is the camaraderie and friendship that runs throughout our membership. You can walk into a room full of members anywhere and find the same shared professionalism, integrity and generosity of knowledge."

(not pictured)

Michelle Bernson

Secretary

Are you making the most of your listing in our popular "Find a Designer" directory on our website?

The APLD California Chapter website allows you to include a photo of yourself or a project, and share detailed information about your approach to Landscape Design. Take advantage of the APLD "Find a Designer" directory link. Your potential clients want to know you better.

[Update your Find a Designer Profile today](#)

Are you looking for opportunities to share tips and ideas with other APLD California Chapter Members? Join an APLD Yahoo Group.

There are two online APLD discussion boards, powered by Yahoo. The groups are loosely divided by north and south, but any current APLD CA member can join either group, and many members monitor both groups. To join, go to the Yahoo Group page of your choice, and click on 'Join Group'. The request will go to the volunteer administrator for approval. Once it is verified that you are a current member, you are approved.

[CA Chapter Group](#)

[APLD Socal](#)

Opportunity Board

John Montgomery Landscape Architects is looking for talented landscape designers and/or landscape architects to join their team. The position is full or part-time with flexible hours. They are looking for a candidate with proficiency in AutoCAD (not Vector Works) and design presentation experience. A Landscape Architecture degree is not a requirement.

Contact:

[Click here to download PDF of job listing](#)

Peninsula Building Materials, an APLD CA Gold Sponsor, is currently looking for a full time employee here at the Showroom in Mt. View. The work week is Tuesday–Saturday. Design/Construction experience is important, but the candidate would also receive full training.

Contact: Les Harris at (408) 640-0554, or email les@pbm1923.com

We need you! Want to be a part of the leadership of APLD?

Do you wonder who is working at the state level, behind the scenes, to ensure that you have the best value for your APLD membership?

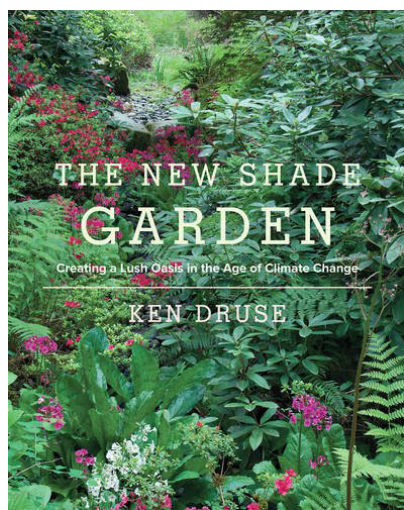
If you are interested in applying your skills, dreams, and energy to our continued organizational growth and development, please contact one of the APLD CA Chapter Board members, or check in at a district level. Opportunities exist for service at every level. Contact your District President for more information.

Our next **Chapter Board Meeting** is tentatively scheduled for June 27–28 in Los Angeles, following “Dwell on Design.” We hope that many local members can join us for a social gathering at some time during the two-day meeting. More details to come.

[Contact us here](#)

BOOK REVIEW

RECOMMENDED BY DIANE GOLDSMITH



Ken Druse is an amazing plantsman with a knack for telling a good story. As a student of horticulture, I loved his book, "Making More Plants," which is now—sadly—hard to find. So I am always happy to check out his new books. Although his is an East Coast perspective, Ken Druse looks at gardening from a designer's point of view. He is, above all, a naturalist. You can learn from him. —DG

The New Shade Garden

By Ken Druse

There is a new generation of gardeners who are planting gardens not only for their visual beauty but also for their ability to reduce carbon dioxide in the atmosphere. In *The New Shade Garden*, Ken Druse provides this generation with a comprehensive guide to creating a shade garden with an emphasis on the adjustments necessary for our changing climate. Druse offers advice for common problems facing today's gardeners, from addressing the deer situation to watering plants without stressing limited resources. Detailing all aspects of the gardening process, the book covers basic topics such as designing your own garden, pruning trees, preparing soil for planting, and the vast array of flowers and greenery that grow best in the shade. Perfect for new and seasoned gardeners alike, this wide-ranging encyclopedic manual provides all the information you need to start or improve upon your own shade garden.

\$ 27.19 Amazon Books

About the Author / Ken Druse

Ken Druse has been called a "gardening superstar." With sixteen books to his credit, frequent television appearances, regular articles for leading national newspapers and magazines, and now with his Podcast, he is one of the nation's leading voices of natural gardening. His groundbreaking book, "The Natural Garden," initiated a design movement that continues to grow in popularity today.

An organic gardener, writer, photographer, designer, and naturalist, Ken's passion is to inspire and empower others to make gardening part of a balanced life, and to enhance their community through taking care of their piece of the earth.

In April, 2004, Ken received the Sarah Chapman Francis Medal for "Literary Achievement" from the Garden Club of America. This lifetime award was presented for Ken's entire body of work communicating about gardening and the environment.

[Review reprinted from Amazon]



APLD MEMBERS IN ACTION

Bay Area Members: Join in the work being done by the EBMUD Landscape Advisory Committee

APLD members have been active, influential stakeholders and contributors to the work of the EBMUD Landscape Advisory Committee (LAC), where we join respected colleagues to advise and ensure that EBMUD is successful in meeting their landscape water conservation goals. The LAC will hold its next General meeting on Monday, March 21, 2016, from 3:30 to 5:00 p.m. at the EBMUD Administration Building, 375 Eleventh Street, Oakland, Large Training Room, 2nd Floor.

The three EBMUD Landscape Advisory Sub-Committees will continue to meet between now and the March general meeting. If you are interested in participating in these Sub-Committees please contact the Sub-Committee chair for meeting times and locations.

- Education & Outreach Sub-Committee Chair: Georgia Madden georgia@fmlanddesign.com
- Professional Development Sub-Committee Chair: Peter Rosen peter@dynamicdesigns.us
- Technology Sub-Committee Chair Eric Santos esantos@valleycrest.com

New LAC Website for Professionals and Homeowners

[VISIT THE WEBSITE HERE](#)

Remember to bookmark the new LAC Website to be aware of future meetings, minutes, presentations, and other LAC related resources that will be posted. EBMUD's hope is that the LAC Website will be a destination for professionals and homeowners to find the best current information and resources on how to design, install, maintain and manage efficient, drought resilient, easy to

maintain and sustainable landscapes that provide multiple benefits to property owners and stretch the water supply especially during periodic droughts.

The LAC is stronger when diverse perspectives from all aspects of the green industry are represented, and an open invitation is extended to any interested professional or homeowner. If you know anyone who can contribute or benefit from the LAC and its Sub-Committees please direct them to the LAC Mailing List Sign Up Form.

For more details, contact Scott Sommerfeld, Water Conservation Representative, ssommerf@ebmud.com.



You Be the Judge

UC Landscape Plant Irrigation Trials opens its fields in spring and fall to landscape professionals for pre- and post-treatment ratings of new plant varieties and current market offerings. Join breeders, nurserymen, designers, Master Gardeners, and horticultural academics in our research field. Look for details and registrations in the next newsletter.



Photo Credit: Karrie Ried



MEMBERS IN THE NEWS

Congratulations to **Linda Bresler**, of Living Designs by Linda, an APLD San Diego District member. Her article, "Tolerant Beauty: From typical tract home and green lawn to a resilient oasis", was featured in the most recent publication of *Pacific Horticulture* (Winter 2016, pages 49-53). Linda outlined the transformation of a typical tract home with water-thirsty lawn to a beautiful drought tolerant landscape.

And speaking of *Pacific Horticulture*, are you a subscriber? Please don't miss the wealth of cutting-edge horticultural information found in this award-winning publication of the Pacific Horticultural Society.

The Winter 2016 issue also contains the first in an important series, the beautifully written "Water-Sensitive Landscape Design Part 1: A Watershed Approach", by **Marilee Kuhlmann**, with **Paula Henson** and **Tom Rau**, ASLA. This team, also known as the Urban Water Group, will be familiar to any member of the APLD Greater Los Angeles District. Marilee has held most key positions on the GLA Board of Directors, including President.

Linda Bresler's garden after two years. It won the 2015 California-Friendly Landscape Contest for Oceanside, CA.

Paula and Tom, both longtime APLD members active in the district's Sustainability Committee, joined Marilee in this issue to tell moving and beautiful stories that reveal the strong childhood connections we all make to the watershed. Illustrated by Alex Stevens, this series brings hope that through our gardens, we can rekindle that connection and change our relationship with the land, water and soil in California.



Pacific Horticulture Magazine for Winter 2016

Also noted . . .

The work of **Ryan Prange** of Falling Waters Landscape, Inc. appears in the October issue of *Sunset Magazine* (pg. 34-38). And as if that is not wonderful enough, photos of some of his fire pits appear in the most recent *Garden Design Bookazine* (pg. 3, 4, and 33).

SACRAMENTO DISTRICT GETS ONBOARD WITH MWELO

By Lori Palmquist



Photo © 2016 Lori Palmquist

On December 9th, at Silverado Building Materials in Sacramento, APLD members and others were educated about the state's new MWELO, and also witnessed the rescue of a sinking ship. The event was a talk on MWELO given by APLD members Cheryl Buckwalter and myself, Lori Palmquist.

The Sacramento District has been in danger of going quiet for a few years now. The board has barely been scraping together enough people to be viable, and keep the district alive. People like Marti Meyer, Aimee Hendrie, and Martin Carrion van Rijn have been keeping the district limping along.

Before **Cheryl Buckwalter** and I started our talk on MWELO, Colleen Hamilton, one of the founding members of the Sacramento district, and at that moment, the President of APLD International, made an impassioned plea for keeping the district alive. She asked that anybody interested stick around after the event, and chat about it. To our delight, a great group of people have agreed to continue the district, at a level of involvement that they can manage with their busy work and home lives. You can see most of them listed in the Sacramento Meet the Board article on page 13.

If the super successful MWELO talk is any indication, there are many eager passengers, ready to join us for 2016 and beyond. The house was packed. Twenty-five people signed up, and forty-three showed up. They came from Sonoma, Chico, Modesto, Ripon, Aptos, Gilroy, and of course, the Sacramento region. I couldn't believe how far some of them drove. We had a good mix of landscape architects, landscape designers, landscape contractors, and even Chuck Ingels, the Farm and Horticultural Advisor for UC Extension, Sacramento County was there. It was a lively, engaged crowd.

We had a wonderful dinner of chili, beef stew, salad, raw veggies, and homemade bread. The venue of Silverado Building Materials and Nursery showroom was lovely and inviting to us, as always. They were welcoming and gracious hosts, and made sure most of us left with poinsettias to remember the occasion.

APLD is alive and well in the Sacramento area! The great energy and passion for excellent landscape design and strong networking connections is present in each and every person involved. You can feel it. When the district was in danger of falling into a deep sleep, the dedicated members of the district rallied. Bravo Sacramento!

Take a Weekly Garden Tour with GardenSoft's Garden of the Week



Arbor with grasses by Rick Laughlin

Landscape Designers are constantly on the look out for clever ideas, and garden tours are ideal for the purpose. Between tours, a **Garden of the Week** email can briefly transport you (and your clients) to an online tour, created to give designers and garden enthusiasts an inspiring garden story every week of the year, from the comfort of their homes and offices.

To sign up, simply send an email of request to Gerry Kiffe, gerry@gardensoft.com, and join the hundreds of subscribers who receive a weekly email link to a short photo essay and description about the **Garden of the Week**. A visit to a **Garden of the Week** is intended to be relaxing and rejuvenating, like the gardens themselves.

Upon receiving a **Garden of the Week** email, click on the link for a full-screen, ten-image slide show. An optional audio feature offers serene and wonderful tunes from the likes of Tommy Emmanuel, Adam Rafferty, Don Latarski, Dave Koz, and many others. Why not give yourself a 3-minute break and enjoy your "walkthrough", and absorb some beautiful sounds and images?

Garden of the Week evolved from the significant work GardenSoft has done over the past 16 years, particularly with water agencies throughout California. GardenSoft has created over 50 water-wise gardening web sites to promote water efficiency with an emphasis on beauty (www.watersmartgardening.com). Each one of these web sites contains almost a 1,000 garden images, and many of these images are from gardens designed by APLD members in the west.

If you would like to see a garden you have designed appear in **Garden of the Week**, or if you would like a great water efficient garden of your own featured on one of GardenSoft's 50 water-wise gardening web sites, hosted by local water agencies, please contact Gerry Kiffe at gerry@gardensoft.com.

From the start, APLD members have been key contributors to the GardenSoft library. The very first garden featured was a project by APLD Certified Member Peggy Hinman, a founding California Chapter member hailing from Atherton California. Featured gardens are typically residential, but on the week of this writing, **Garden of the Week** is visiting the incredible gardens of Seattle University located downtown in the Emerald City. These gardens also generate discussion and camaraderie among Landscape Designers.

Garden of the Week created a buzz on LinkedIn when a guessing game of "where is this garden" was posted in the Landscape section. A Stockton garden featuring Parkinsonia stumped hundreds of designers before it was guessed correctly. A garden in Wroclaw, Poland (a bit unfair you would think) stumped all comers on the popular business social network.

And, watch this newsletter for future updates on the new Cloud edition of PlantMaster.com.



Succulents by Amelia Lima

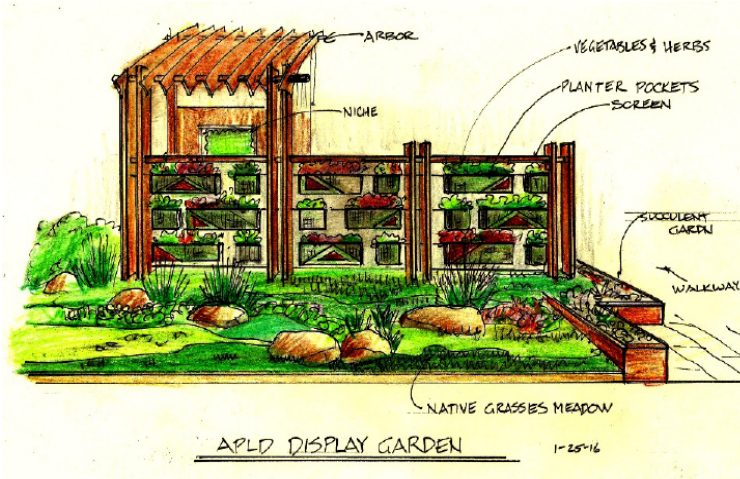


Beachside garden by Korina Petrozzi

Photos courtesy of Garden Soft

FEATURED APLD CALIFORNIA CHAPTER AND DISTRICT EVENTS

APLD at the 2016 San Francisco Flower & Garden Show / March 16-20



This is a do-not-miss year for the San Francisco Flower & Garden Show. APLD Bay Area District members have been busy designing and creating a display garden for the San Francisco Flower & Garden Show, being held at the San Mateo Event Center, on March 16-20.

A series of Construction Parties has been scheduled, and all are listed in our Online Events Calendar. We will offer Designer Consultations again this year, and we need 40-50 designers to join us in the fun and rewarding process of consulting with home gardeners who seek ways to have beautiful, functional, low water gardens. Please answer the call and join in the fun. Current Bay Area District and Sacramento District Members will regular updates on the show garden and volunteer opportunities, watch your email!

We're talking about the show on [Facebook](#). Come join us!

APLD Bay Area District Presents: Outdoor FX Luminaire Lighting Demonstration at Flora Grubb in San Francisco



Held on Tuesday, February 9 from 5 pm to 7 pm, this program was a hit with all the designers who attended. This program earns 2 CEUs.

APLD Sacramento District Presents: Board Meeting

Join us to plan events for the rest of the year. All are welcome! Email SACDistrict@apldca.org for more details.

WHEN: Monday, February 22 from 4 pm to 6 pm

WHERE: Silverado Design Center, 5250 South Watt Avenue, Sacramento

APLD San Diego District Presents: Houzz University

Houzz University is an interactive, hands-on workshop, where a Houzz marketing expert will work with you side-by-side in a classroom style setting. Whether you are just getting started using Houzz for your marketing, or need some help increasing your exposure, this 2-hour workshop is for you! Bring your laptop. Snacks and drinks along with a self-guided tour of the Innovation Center will be from 3-4 pm. Houzz University starts at 4 pm. **APLD CEUs: Pending / Ticket Required via Eventbrite**

WHEN: Wednesday, February 10 from 3 pm to 6:30 pm

WHERE: SDG&E Innovation Center, 4760 Clairemont Mesa Blvd., San Diego

APLD Greater Los Angeles District Presents: Photography Webinar Viewing and Brainstorming Session

We will gather at the home of Jacky Surber, President, APLD Greater Los Angeles District, to view the first Webinar in the APLD 2016 Educational Webinar Series. The topic of the webinar is "Photography for Landscape Designers: In the Field, in the Darkroom and in the World," by Allan Mandell. Come get to know your fellow members at this informal free* event. (*Free for current members). **APLD CEUs: 1**

Or, if you prefer to view the webinar at your location, you can register here, on the APLD Website.

WHEN: Thursday, February 18 from 10:30 am to 12:30 pm

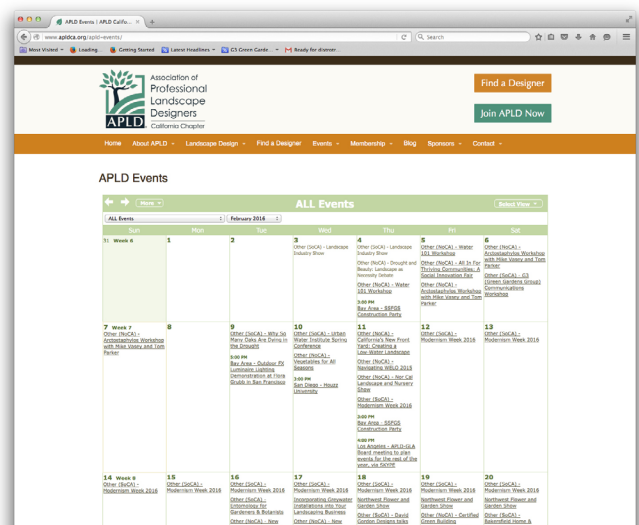
WHERE: Location provided upon RSVP ([via Eventbrite](#))

Questions? email jackysurber@gmail.com

A New "Small But Mighty" Newsletter Event List

To ensure that you get timely word of upcoming events, we have upped our game with our [Online Events Calendar](#).

There you will find the latest APLD Events in California and beyond, along with daily listings of many other events of interest to Landscape Designers and other Green Industry Professionals.



Are you an event host who would like to expand the description of your event, or would you like to post an event? Scroll to the bottom of our Events Calendar page, and click on **Public Calendar Add**. There, you can add descriptions, registration links, and other information, and enrich our calendar's offerings.

Please note that Public Calendar submissions are typically approved once a week, and the content must be relevant to professional landscape designers. Think CEUs.

Would you like to include a flyer or other attachment to your event link? First, you must enter your event information for each individual event. Then, once you have submitted your event, please send the attachment or other detail you wish to include to calendar@apldca.org.

Our members are collecting CEUs for our new membership categories, and we hope that event hosts will follow the simple process of applying for APLD CEUs, to attract our members to your events. To apply, please click on our [CEU Application and Payment Form](#).

Thank you for your service.

The members of the APLD CA Chapter Board would like to sincerely thank two long-time volunteers who have recently retired from the board.

Pamela Berstler of G3, Green Gardens Group in Los Angeles, has served on the Chapter Board for many years. Most of that was spent tirelessly defending the rights of landscape designers to practice in the state of CA as our Advocacy Chair. She traveled up and down the state, attended countless committee and board meetings, and was instrumental in guiding APLD CA in our current focus of advocating for the Watershed Approach to California landscapes. She has handed her baton to Amelia Lima, APLD, who will continue in this positive direction. Pamela is now focusing her attention on G3 and their goal of transforming the environment by motivating people to save soil, sequester carbon, secure water supplies, and restore watersheds. We are also pleased that Pamela and G3 will continue to be involved in APLD activities as a newly upgraded Gold Sponsor.



Michelle Bellefeuille of Belle Feuille Garden Design in Santa Rosa, has recently stepped down from the board after several years of dedicated service. Michelle served simultaneously on the Chapter Board and the North Bay District (now the Bay Area District) Boards in several different positions. Michelle

planned and contributed to many successful programs including tours, board meetings, and educational symposia. She most recently was instrumental in the planning of the very successful APLD + Pacific Horticulture Seminar "Defining a New Northern California Landscape". Her kindness, wisdom, and gentle nature will be missed by all in the boardroom.



Todd Layt, walking some of his ongoing turf breeding grounds.



Plants for Tough Times—Tuffy Plants and the New California Garden

by Maureen Decombe

All landscape designers are on a timeless search for the perfect supporting players that hold a garden together—no matter what the conditions. The rains had not yet begun when I got a chance last October to talk with Todd Layt, of Ozbreed Pty Ltd in NSW Australia, a plant breeding company and contributor to the Tuffy Plant Collection™, (an APLD CA Gold Sponsor). As you might imagine, our conversation started with the California drought.

Throughout Australia's drought, you have developed a line of plants that can stand up to extreme conditions. You've lived through this and come through to the other side. What can we expect in California?

In Australia, even in the earliest days, water restrictions quickly became the norm. The industry realized that the path to self-preservation was voluntarily shifting production to more drought tolerant plants. They led the charge to convince people to use drought tolerant plants. Once the drought hit we were ready to go.

In California, we expect El Niño to make an appearance, with a chance of drenching rains and stormwater runoff. We need plants that work in wet and dry conditions. What is your standby plant for rain collection areas that go dry in summer?

In general, most Tuffy varieties are best suited to drier conditions, but there are some exceptions. If it's very wet, *Lomandra* 'Katie Belles' is particularly good with wet feet. Other varieties that have proven adaptable to periodic wet feet are *Callistemon* 'Slim', *Callistemon* 'Macarthur', *Dianella* 'King Alfred', *Lomandra* 'TropicBelle', and *Westringia* 'Grey Box'.

We have a new one coming out soon—in a year—*Lomandra* 'Baby Breeze', a dwarf that is one-half the height of *Lomandra* 'Breeze', but it can handle very wet soils. These same varieties also respond well to accidental overwatering due to irrigation management issues at any time of the year making them better than succulents in cases of overwatering.

And, when these wet areas turn dry, *Lomandra* and *Dianella* have a survival mechanism that allows them to regulate their water use in dry weather, which makes them highly adaptable. Normal plant functions ("metabolic processes") slow down, allowing plants to stay evergreen during long dry spells.

If I asked you for a "Top Five" from your collection, based on overall garden worthiness, what might surprise us from that list?

continued next page...

Plants for Tough Times, continued...

Westringia 'Grey Box' won plant of the year in Australia, and it is growing well with wet feet in our trial garden. It is a great rain garden plant, which surprised everyone. *Westringia* 'Mundi' is not quite as good, but can hold its own with short inundation.

What about combining Tuffy Plants with California Native plantings?

Lomandras play nice with wildflowers for a meadow effect. The new *Westringias* also work well in this application. They are reliable supporting players.

A successful mixed planting is only as good as the weakest plant. Drifts and mass plantings work best, and all do best in groups rather than mixed. Follow the 80/20 rule for plants—use 80% that are tough and work hard, then play with the remaining 20%.

Dry slopes are a big concern to those of us who live in hillsides. With El Niño making an appearance after this dry spell, there are many exposed hillsides. Do you have any words of wisdom?

Any grass or strappy plant has an incredible root system. Grasses have much deeper root systems than shrubs. Research shows significant advantages among the *Dianellas*. Their roots spread even faster and farther. **About that "Top Five List"...**

I look for plants that thrive in Western Australia to perform well in California: *Lomandra* 'Breeze'; *Dianella* 'Cassa Blue'; and *D.* 'Little Rev', if cut back every 3-4 years; *L.* 'Nyalla' for coastal salt tolerance; and 'Grey Box'—the pick of the *Westringias*—as well as *W.* 'Low Horizon', a selection of *W.* 'Mundi', as a ground cover.

Wait, that's more than five...

Callistemons! 'Green John' is dark green and 20% smaller. I love a *Callistemon* next to a wall. 'Slim' can be sheared hard in applications where you need a screen.

With the exception of the *Callistemons*, you're referring to mostly ever-green background players. What about a pop of reliable color?

Another favorite—Velvet Kangaroo Paws—do not get blackspot, and are longer lived. They are not annuals, like many on the market. For ease of maintenance, perennial *Anigozanthos* is a must. The "Velvets" hold their leaves and structure longer, due to the *Anigozanthos flavidus* in their makeup.

Though they are not fussy about fertilizer, *Anigozanthos* like to be fertilized, and can tolerate richer soils. Cut back once per year at the end of winter to encourage new growth.

For the full article and more plant pics, visit our blog

Todd's Top Five (or more) Water-Wise Plant Picks from Tuffy



Lomandra 'Breeze'



Dianella 'Cassa Blue'



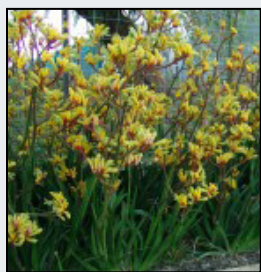
Dianella 'Little Rev'



Lomandra 'Nyalla'



Westringia 'Low Horizon'



A. 'Gold Velvet'



Callistemon 'Green John'

For a closer look at the Tuffy Plant Collection, visit www.tuffyplants.com