



Association of  
Professional  
Landscape  
Designers  
APLD California Chapter

# APLD California Chapter Newsletter

JUNE 2016



Photo: Jeff Turner

## Leadership in Landscape Design

- **Special advocacy issue: a new dawn in Sacramento**
- **Celebrating newly certified members**
- **“Designed by an APLD member” signs make their debut**
- **APLD district updates**



# Why I think you should take the time to read this newsletter



Dear APLD Members, Sponsors and Allies,

If your business is anything like mine right now, you are likely hard pressed to find time to even open this newsletter, let alone read it. But I'd like to ask you to grab a cup of coffee or glass of wine and take a few moments to look this over.

I'd like you to understand what is happening in the California landscape—specifically what is happening outside of your immediate business. After many years and countless volunteer hours by our members, we have reached a magical moment in time where the state legislature and the public are ready to embrace a new kind of well-designed landscape that goes beyond water budgets, equipment efficiency, and low water use plants.

With a primary focus on healthy, living soils and using storm water as a resource, APLD CA is firmly standing behind the Watershed Approach to Landscaping and we invite you to help us spread the word.

In Sacramento, I recently joined APLD CA past presidents Maureen Decombe and Pamela Berstler (director of G3, Green Gardens Group, and APLD CA Gold Sponsor) to present an informational briefing, "Watershed Approach Landscaping: Realizing the Full Benefit of California's Landscapes".

Pamela illustrated the watershed approach with beautiful slides of gardens (many designed by APLD members) and Paul Herzog, (Surfrider Foundation's Ocean Friendly Garden Program Coordinator) followed with "Standards for Implementation of the Watershed Approach".

Maureen was joined by professional and public education leaders Ann-Marie Benz of ReScape California and Marian Bender of EcoLandscape California, and Pamela of G3, Green Gardens Group, to describe current education and training programs for land owners and landscape professionals.

Allan Lessick (California Association of Local Conservation Corps) addressed workforce training and education. Recent Corps graduate Jacob Crooks shared his story of growth and skill-building including completing his high school diploma, all through Corps-supported watershed training. He has now entered the workforce as a trained entry level landscape professional, ready to contribute to expanding the watershed approach.

Gregory Weber (California Urban Water Conservation Council) described the market transformation underway to achieve the "New Normal in California Landscapes", and Jeffrey Albrecht (State Water Resources Control Board) laid out the goals of the Strategy to Optimize Resource Management of Stormwater Strategy (STORMS).

I am putting my effort into the education of landscape professionals and homeowners. Stay tuned for a series of Watershed Approach basics and design classes in the next few months. We are partnering with G3, Green Gardens Group, the California Department of Water Resources, and local water agencies to get the word out that sustainable landscaping is no longer just about "losing the lawn" and reducing irrigation applications. We are part of a movement of landscape professionals with the ambition to change the way landscapes are designed, installed, and maintained.

If you only have time to read one more thing in this newsletter, I encourage you to take a look at the advocacy update on the following pages. You will see that we are truly focused on "the right thing, at the right time and in the right place".

Cheers,

Mary Fisher, APLD

# APLD Advocates for a Watershed Approach to California Landscapes

## **APLD and the evolution of a “New Normal”**

When you think of APLD California Chapter advocacy, what comes to mind? Protecting the right to practice? Or, do you think first of the future of California landscapes—the “New Normal”, and our response to crucial environmental challenges? The climate has changed, and our approach as evolved.

At its core, APLD advocacy promotes the best interests of our collective businesses. This is the very reason for our existence. At the same time, we are exceedingly fortunate that our business interests have converged with the community need for landscape-based solutions, education, and standards. Our work influences the future of landscape design, addresses the environmental crises of our time, and offers our industry a higher purpose—meaningful and beneficial work.

To this end, we embrace the watershed approach to California landscapes, and we advocate for simple, easy-to-understand standards to achieve multiple synergistic benefits for our clients and communities. For example, 3” of mulch retains moisture in the soil, prevents weeds, and sequesters carbon. This is as true in a 500 sq ft garden as it is on a massive corporate campus.

Our expanded role as advocates for the environment aligns perfectly with our right to practice—because a trained and capable pool of qualified and committed designers is needed to help the public design and transform their gardens.

Small or large, these actions represent squares in a great quilt of landscape-based drought and climate solutions. These solutions scale to provide significant measurable benefits by sequestering carbon, significantly reducing potable outdoor water use, and helping to clean polluted stormwater.

Design is fundamentally an education process, and there is no better classroom than the garden itself. We are reaching out to the public to draw them into well designed gardens and inspire change.

“Watershed Approach” tours increase public understanding of this new kind of garden, and the beautiful, predictable, no-regrets results anyone can achieve in their garden. As designers speak in a unified voice to demonstrate the watershed approach, we lead the transition to a smarter way to design, garden, and live.

## **Defining the Watershed Approach**

Already codified in the current Model Water Efficient Landscape Ordinance (MWEL), the watershed ap-

proach now runs through an array of policy documents, recommendations to the legislature, and proposed legislation.

How does APLD define the watershed approach to California landscapes? In summary, we regard rainwater as a resource; climate appropriate and non-invasive plants as the core plant palette; and we recognize that mulch and compost are the essential glue that holds successful gardens together.

Furthermore, we believe the education and training of an expanded and qualified workforce of landscape professionals—including designers—is every bit as important as compost, mulch, or irrigation efficiency.

Here are some of the ways we have joined with our colleagues to stand up for the right thing, at the right time, in the right place, and advocate for the right to practice.

## **DWR Independent Technical Panel**

In 2013, the Department of Water Resources (DWR) convened an independent technical panel to envision and recommend a roadmap for landscape water use efficiency. APLD was present at many of the meetings during this three-year process. Panel experts heard from a broad array of organizations, including 2016 advocacy chair Amelia Lima, APLD, and her predecessor, Pamela Berstler. I also attended a few of the meetings, and observed that the committee followed a thoughtful, measured, and inclusive process.

Many of our recommendations were considered and included in the final report. It was a pleasure to be able to contribute to the panel's vision and recommendations. We addressed the error of marking one kind of plant (turf) the scapegoat for poorly designed and managed landscapes. This language was changed.

We offered our experience and ground-truthed assumptions about the business of landscape design in California, and the broad workforce that is included in the landscape industry. Language referring to permit submittals was changed, to include an “agent of the owner”.

These are important *recommendations*, so we know the real work lies ahead. Many people are working together in harmony to make these important changes, with the shared goal for a positive outcome for all landscape professionals in California.

*Continued, page 20*

## It's membership renewal time...

### Continue your Professional Growth with APLD

Beginning with the 2016 renewal cycle, APLD launched new membership categories that will continue to advance the profession of landscape design, and promote the recognition of landscape designers as qualified and dedicated professionals. Please [click here](#) for a full description of the membership categories.

Members renewing with the July 1, 2016 cycle should renew prior to June 30, 2016, to continue receiving **member benefits**.

Questions regarding membership renewal should be directed to [membership@apld.org](mailto:membership@apld.org), or 717-238-9780.

### To renew your membership:

1

Collect any necessary documentation based on your membership category before you begin this process. [Click here](#) for details.

3

Enter all information based on your membership category.

4

Elect to pay online or send a check and click "Confirm Payment."

2

Log in to the members' area of the APLD website, [www.apld.org](http://www.apld.org), and find the "Renew" button located below your profile picture.

5

Verify your information and click "Continue" membership.

### Why I am Certified

I remember agonizing over what gardens to feature, and if they would be good enough, for my submittals for certification. I thought, "Why go through this agony?" And then I remembered, and still realize, that APLD certification was a critical benchmark in my landscape design career. It was the instance when I was judged by my peers as an excellent, professional landscape designer. No more, "but I was just lucky" or "I had the perfect situation/client/plants/contractor." I was a good, certifiably good designer!

I could take a deep breath and forever put APLD after my name, and "Nationally Certified Landscape Designer" under it, if I wanted.

It's amazing the certainty and quiet confidence that certification brings. It also brings being listed in the top portion of the "find a designer" on the APLD and APLD CA websites. Magazine and newspaper writers ask to interview me for their landscape design articles, sometimes featuring quotes and sometimes featuring my gardens.

Certification brings respect from my colleagues. It also garners questions from my clients as to what the APLD means after my name, which gives me an opportunity to tell them I'm a nationally certified landscape designer that they can trust to give them a well-designed garden. I'm still amazed, after 15 years of being certified: I still feel a sense of accomplishment and pride each time I put APLD after my name.

—Patricia St. John, APLD



Patricia St. John, APLD

Excerpted from the June 2016 issue of APLD's *Design Online*





is proud to invite you to

# An Evening about “The Intelligent Use of Water”

Join us to learn about the  
latest resources for  
landscape designers  
& irrigation efficiency  
with our 2016 Platinum Sponsor



This evening event will include food, drink, door prizes, and exciting speakers in a casual, relaxing atmosphere. Learn about the most up to date irrigation technology while mingling and networking with landscape designers, contractors, horticulturists and landscape industry leaders from all over California.

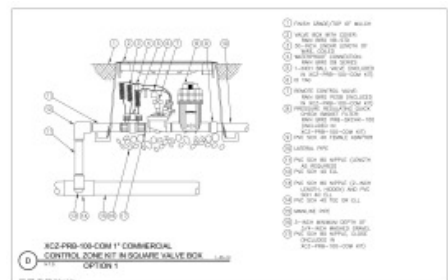
**WHEN:** Monday, June 27th, 2016  
from 7:00 to 10:00 PM

**WHERE:** Ca Del Sole Ristorante Italiano,  
4100 Cahuenga Blvd, Los Angeles, CA

**TICKETS:** APLD Members: \$10.00  
Non-APLD Members: \$30.00

**SPACE IS VERY LIMITED,  
ADVANCED REGISTRATION REQUIRED**

by clicking on this link: <http://theintelligentuseofwater.eventbrite.com>



# APLD California Chapter Quick Guide to 2016 Sponsors

## WELCOME TO OUR 2016 PLATINUM SPONSOR



The Intelligent Use of Water™

**rainbird.com**

Rain Bird Corporation is the leading manufacturer and provider of irrigation products and services. Since its beginnings, Rain Bird has offered the industry's broadest range of irrigation products for farms, golf courses, sports arenas, commercial developments and homes in more than 130 countries around the world.

## 2016 APLD CA GOLD SPONSORS



**bamboopipeline.com**

The single source supply solution for landscape professionals, delivering plants and trees along with a full range of other landscape materials directly to your job site—often within twenty-four hours. We sell over 10,000 varieties of plants and trees.



**idiggreenacres.com**

A family owned independent garden center. We offer premium quality plants, knowledgeable service and competitive prices. Our Contractor Sales team is available to assist landscape professionals.



**belgard.biz**

Belgard concrete pavers and retaining walls will enhance the aesthetics and value of your client's property. With a wide selection of colors, shapes and finishes, these products enhance any architectural style from Craftsman to Contemporary, and Mission to Mediterranean.



**lyngsogarden.com**

Large selection of natural stone for paving, accents, walls, and water features. Custom and stock soil mixes, high quality compost, mulches, and organic fertilizers. Sustainable options, and many delivery choices, with a sales staff dedicated to the needs of professional designers. We look forward to working with you on your project.



**thebrickyard.com**

Brickyard Building Materials serves all of your hardscape needs—specializing in masonry; natural stone; cultured stone; thin veneer stone; and landscape boulders. We are the leading distributors of retaining wall blocks & interlocking pavers, along with all the allied materials to satisfy your client's needs.



**mswn.com**

Wholesale nursery grower of desert-adapted plants for the Southwest. We develop and specialize in plant quality, customer service and expertise



**greengardensgroup.com**

Organization at the forefront of the Watershed Approach to landscaping. Training and certification for landscape professionals, including EPA WaterSense certification for Irrigation System Auditor. Professional opportunities and career development apprenticeships turning the landscape into an environmental solution.



**ogawamune@yahoo.com**

Nestled in the historic Niles District of Fremont, Ogawa-Mune is a full service wholesale nursery and plant broker serving many parts of the Bay Area.



**devilmountainnursery.com**

At Devil Mountain Wholesale Nursery, enjoy the benefits of dealing with people who are passionate about plants and dedicated to excellence in every transaction.



**Pacific Nurseries**

**pacificnurseries.com**

Pacific Nurseries is a full service wholesale grower and broker of quality landscape plants. Our role is to provide you, the landscape professional, with everything you need in quality plant materials; from ground covers to specimen trees. One of the leading suppliers in the greater San Francisco Bay Area.



**emerisa.com**

Emerisa Gardens, Inc. is a wholesale nursery catering to landscapers and independent garden centers. We specialize in 4-inch perennials, herbs, ornamental grasses, roses, phormiums, shrubs, and organic herbs and vegetables.



**pbm1923.com**

Global selection with personal service. PBM—your natural stone, manufactured stone, brick and paver supplier. Serving Northern California since 1923, with a masonry showroom in Mountain View and four Greater Bay Area yards.



## 2016 APLD CA GOLD SPONSORS



[sanmarcosgrowers.com](http://sanmarcosgrowers.com)

San Marcos Growers is a wholesale nursery located in Santa Barbara that specializes in plants for California's Mediterranean climate, including bulbs, grasses, perennials, succulents, shrubs, trees and vines. We are not open to the public but sell to retail nurseries and landscape professionals throughout California.



[urbanfarmerstore.com](http://urbanfarmerstore.com)

We sell efficient irrigation, lighting supplies. We promote these sales through education and customer service. We specialize in drip irrigation, efficient spray systems and LED lighting. Our stores are in San Francisco, Mill Valley, and Richmond.



[spjlighting.com](http://spjlighting.com)

American Manufacturer of solid brass and copper outdoor landscape lighting.



[urbantreefarm.com](http://urbantreefarm.com)

A twenty-acre nursery in Santa Rosa with over two thousand varieties of the finest nursery stock available: trees, shrubs, perennials, fruit trees, olives, specimen trees, Japanese maples, conifers & natives. Delivering to many parts of the Bay Area.



[tuffypants.com](http://tuffypants.com)

Tough, low-maintenance plants that were bred & individually selected to provide design professionals with solutions to common landscape challenges. Each variety not only looks great but also possess its own unique landscape benefits that will compliment any low maintenance plant palette.



[villagenurserieslc.com](http://villagenurserieslc.com)

Wholesale grower of ornamental plant material to the landscape professionals with more than 700 acres of growing facilities in both Northern and Southern California, which provides us the growing opportunities to optimize quantity, quality and diversity.

## 2016 APLD CA SILVER SPONSORS



ASIAN CERAMICS INC.

[asian-ceramics.com](http://asian-ceramics.com)



Hunter®

[fxl.com](http://fxl.com) & [hunterindustries.com](http://hunterindustries.com)



[gardensoft.com](http://gardensoft.com)



[lightcraftoutdoor.com](http://lightcraftoutdoor.com)



[deltabluegrass.com](http://deltabluegrass.com)



[visionrecycling.com](http://visionrecycling.com)

## 2016 APLD CA BRONZE SPONSORS

**Bourget Bros.  
Building Materials**  
[bourgetbros.com](http://bourgetbros.com)

**Calstone Company**  
[calstone.com](http://calstone.com)

**Ewing Irrigation**  
[ewing1.com](http://ewing1.com)

**Gro-Power**  
[gropower.com](http://gropower.com)

**Nature Designs**  
[naturedesigns.net](http://naturedesigns.net)

**Sunset Western Garden Collection**  
[sunsetwesterngardencollection.com](http://sunsetwesterngardencollection.com)

APLD Members:

Do you want to share your positive experience with an APLD CA Sponsor?

We are now collecting Member Testimonials for the 2016/2017 sponsorship year.

Show your appreciation! Send your Sponsor Testimonial to [sponsorship@apldca.org](mailto:sponsorship@apldca.org)

# A sign of good things to come...

## Designed by an APLD Member Signs Coming to a Garden Tour Near You

New APLD garden tours signs had their debut in Northern California on the recent Elk Grove Greener Gardens Tour. The signs are intended to increase APLD's visibility with the public, and promote professional landscape design. APLD member Soleil Tranquilli, one of three tour organizers, embraced the concept and placed the signs in five gardens, all designed by APLD members. Maureen Decombe headed the California Chapter effort to create the signs in time to use them in this year's spring events. Thank you, Soleil and Maureen!

—Bernadette Balics

Designed by an  
APLD member



Association of  
Professional  
Landscape  
Designers  
California Chapter



[www.apldca.org](http://www.apldca.org)





On Thursday, May 12th I had a wonderful opportunity to attend the first annual Spring Field Day held at the forty-acre, Tree Of Life native plant nursery in San Juan Capistrano. It was a joint event hosted by Mike Evans of Tree of Life Nursery and Wendy Proud of Mountain States Wholesale Nursery, an APLD Gold Sponsor.

Mike Evans and his partner Jeff Bohn have been growing native plants since 1981 and TOLN is the largest native plant supplier in the state. Mountain States Wholesale Nursery has been developing and growing plants native to the desert and the Southwest for 45 years. The fun-filled day included a guided tour of the nursery, informative presentations by Mike (Hardworking Natives), Wendy (Southwest Plants on Holiday) and Jodie Cook of AvantGarden (The Watershed Approach).

This was all followed by a Happy Hour and a sit down, home cooked ranch-style dinner prepared by the wonderful staff of TOLN! The highlights, for me, however, were six fantastic plant vignettes which featured plants from both nurseries. They were entitled *Engaging Architectural Design*, *Coastal Wonders*,

*Naturalistic Garden*, *Shady Retreat* (plants for dry shade!), *My AvantGarden* and *Formal with a Modern Twist*.

We were provided plant lists for each vignette. A couple of stand-out plants that I had never seen were *Foresteria neomexicana*, New Mexico Olive tree and *Dudleya virens ssp. Insularis*, Bright Green Live-Forever. It was exciting to see how seamlessly and artfully plants from both nurseries were combined and I came away with some great new ideas for plant combinations in the garden.

Judging by the turnout, the day was a success and should they have a second annual Spring Field Day, I would heartily encourage everyone who gets an invitation to go.

Sincerely,  
Kimberly Alexander  
President, APLD San Diego District

### Congratulations newly certified APLD members!

APLD San Diego vice president, **David Clarke, APLD** is the latest San Diego District member to achieve certification.

Newly certified member **Jerob Chop, APLD**, hails from the Bay Area District, and **Jon Pride, ASLA, APLD**, from the Greater Los Angeles District.

For more about APLD Certification, visit [APLD.ORG](https://www.apld.org).

## APLD San Diego on Tour!

On April 25th, 2016 the APLD San Diego District sponsored a garden tour to view the work of one its members—Ryan Prange, APLD. Ryan is an award-winning local design/build contractor (Fallingwaters Landscape) with many gardens installed throughout San Diego County. A certified member of APLD, Ryan shared his thoughtful design work with us at two San Diego coastline locations.

A group of eighteen designers descended on the gardens, offering up comments and thoughts while Ryan discussed plant palette and hardscape solutions for each residence. Both were designed in a contemporary style, working closely with the existing structures. Privacy was a concern for both residences. Ryan installed great choices: *Podocarpus* x 'Icee Blue' and *Laurus nobilis*.

Both gardens feature outdoor spas, an appealing combination of plants, and a clean modern look. One garden enjoyed a sweeping western view, while the other was nestled behind the residence, yet both created a sense of intimacy and a desire to linger. As landscape and garden designers, we can attest to the satisfaction in this achievement.

Ryan's sense of space helped to establish this ephemeral quality and all were inspired by the layout, color, and creative hardscape treatments (finished concrete, stained wood, and painted steel). As the drought continues in Southern California, the discussion of BMP's (best management practices) for construction as well as drainage and design of swales was both timely and informative.

Thank you Ryan!

— David Clarke, APLD



Photo by Marilyn Guidroz

Members of APLD San Diego visit two of Ryan Prange's inspired gardens on a tour in April.



## *Forestiera neomexicana*

Desert Olive / New Mexico privet

*Forestiera neomexicana*, or the Desert Olive, is also called the New Mexico privet. This deciduous, native shrub develops great character with age—with great adaptability to different growing conditions. Prune it as a multi-stemmed small tree with ornamental white bark and glowing bright yellow fall color. For size, figure a height of 12–18 feet tall by 12 feet wide. Or use it as a durable shrub for hedges. The plant is dioecious, with the female plants producing large quantities of lovely blue-black berries for the birds. *Forestiera neomexicana* is fast growing in any soil and is a low-water, drought-resistant addition to any California garden. The tree is found in nature from north central California to Riverside and east to Colorado and Texas. It is hardy to 10 degrees.

### Plant Communities

Can grow well with other plants that prefer moist soil and can tolerate full sun such as Sandbar Willow (*Salix exigua*) and Narrow Leaf Milkweed (*Asclepias fascicularis*).

<b>Botanical Name</b>	<i>Forestiera neomexicana</i>
<b>Common Name</b>	New Mexico Privet or Desert Olive
<b>Zones</b>	1-3, 7-24
<b>Light Requirements</b>	Full Sun, Morning Sun / Afternoon Shade
<b>Water Requirements</b>	Low
<b>Mature Height</b>	12-18' tall
<b>Mature Spread</b>	12' wide
<b>Bloom Time</b>	Early to late spring
<b>Habitat</b>	Birds, butterflies, bees, fruit mammals

**Where you can find this plant:** Bay Natives, East Bay Wilds, Grow Native Nursery-C Claremont (RSABG), Las Pilitas (all sites), Moosa Creek Nursery, Native Here Nursery, Rancho Santa Ana Botanic Garden, RECON Native Plants, The Watershed Nursery



Top photo shows the leaves and blue-black berries of *Forestiana neomexicana*. The photo below shows the form of the shrub or small tree.





Two plantings of *Dudleya virens*: the one at the top is growing in part shade; the one at the bottom shows red leaf tips from exposure to the sun.

## *Dudleya virens* / Green LiveForever

Another plant on the tour that drew attention is *Dudleya virens*, the Green LiveForever. As the photograph shows, the Green LiveForever can also turn a lovely shade of red when exposed to sunlight. In either case, this California native is a great addition to the water-efficient garden as it grows well with no extra water. This uncommon perennial succulent plant belongs to the family Crassulaceae, and is found in nature growing in the rocks on the Channel Islands and Palo Verde Peninsula in coastal California. Grow this evergreen plant with gray-green leaves and white flowers in full sun in a well-drained location. It is hardy to 20 degrees.

### Plant Community for *Dudleya virens*

*Dudleya virens* grows well with these xeric plants: *Artemisia californica*, *Opuntia littoralis*, *Rhus integrifolia*, *Encelia californica*, *Isocoma menziesii*, *Lycium californicum*, and *Eriophyllum confertiflorum*. *Arctostaphylos catalinae*, *Prunus ilicifolia* ssp *lyonii*, *Gambelia speciosa*, *Salvia apiana*, *Eriogonum giganteum*, *Ceanothus arboreus*, *Leptosyne gigantea*, *Eriophyllum confertiflorum*, *Ribes viburnifolium*, *Rhamnus ilicifolia*, *Adenostoma fasciculatum*.

<b>Botanical Name</b>	<i>Dudleya virens</i>
<b>Common Name</b>	Green LiveForever
<b>Zones</b>	14-17, 20-24
<b>Light Requirements</b>	Full Sun on coast, Morning Sun & Afternoon Shade in inland locations
<b>Water Requirements</b>	Low
<b>Mature Height</b>	4 inches
<b>Mature Spread</b>	4 ft wide, slowly spreading
<b>Bloom Time</b>	April, May, June
<b>Habitat</b>	Butterfly gardens, Hummingbirds

**Where you can find this plant:** Annie's Annuals, Bay Natives, Buckeye Nursery, Cactus Mart, Capitol Wholesale Nursery, Garden Growers Nursery, Grow Native Nursery-Claremont (RSABG), Moosa Creek Nursery, Rancho Santa Ana Botanic Garden, RECON Native Plants, San Marcos Growers, Suncrest Nurseries, Inc, Tree of Life Nursery, Yerba Buena Nursery

Diane Goldsmith provided these descriptions of two noteworthy plants observed at the Tree of Life First Annual Spring Trial. Is there a noteworthy plant that you would like to share for the next issue? Email [newsletter@apldca.org](mailto:newsletter@apldca.org)





### Hello Members:

By this time of year we are all ready for a vacation! We still have some work to wrap up before we can slow down for the summer, but breaks, socializing, and visits to inspiring landscapes are an important part of our creative process.

Our members got together for just that on 26th of May, with a fun trip to three nurseries, organized by our Membership chair Johanna Woollcott, and the owner and plant breeder of Greenwood Garden, John Schoustra. We got a personal tour of his gorgeous wedding venue style garden.

This garden surrounds John's hilltop home. After exploring this space and learning about what John refers to as "the ugly ducklings"—those plants that do not appeal in the nursery pot but soon reveal their true nature and usefulness upon being planted in the soil—the group gathered up some free trial plants, and shopped at the nursery below. We then visited a specimen tree farm close by, with stunning Palms and Maples among other rare trees. We ended with a guided tour of Berylwood Tree Farm, which if you haven't been, is a must see next time you're in the area.

This summer, we have changed up our programming (thanks to your feedback).

The GLA District is excited to announce a Summer Soiree on Saturday, July 30th at 6:00 PM. Please feel free to invite friends and family. We will have tacos and a lighting display by APLD CA Silver Sponsor LightCraft Outdoor Environments, at the hillside home and garden of Johanna Woollcott. This garden is a treasure trove of hand made art pieces and a unique collection of succulents and other tough plantings. We hope to see you there.

And, keep an eye on your in-box for an invitation to our reception on Monday evening, June 27th, following the APLD California Chapter board meeting, hosted by the APLD Greater Los Angeles District and Rain Bird Corporation, our new Platinum Sponsor. We are thrilled to work with our sponsors to develop these opportunities to learn in a relaxed, social setting.

Members and Sponsors, please watch your email for more news on these upcoming events:

- Dwell on Design, June 25 & 26
- BBQ party with G3, Green Gardens Group, in August

This fall we will tour Tom Stout's Greywater System and garden, have a Drawing Class with Paul Arden, relax in the oasis Laura Morton, APLD calls home.

As we plan for more tours and opportunities to live and learn together, we look forward receiving your input and ideas.

See you soon,

Jacky Surber

*President, APLD Greater Los Angeles District*

## Garden Tour 2016 - Featuring the Watershed Approach to Landscape Design

The Greater LA District's Garden Tour was an incredible success with many attendees who were inspired and uplifted by the variety of gardens showing how beautiful sustainable design can be. Thanks to all who contributed to put this wonderful day together.



Jacky Surber and Francesca Corra representing at APLD Greater Los Angeles Garden Tour

## APLD Greater Los Angeles District to host the APLD California Chapter Board Meeting

Your APLD California Chapter Board will meet on June 27 - June 28, in West Hollywood. The topic of the meeting is local advocacy for the watershed approach to California Landscapes.

The meeting will include an update on APLD CA advocacy in Sacramento, and in each of our four districts.

For more information, or if you are interested in attending, please contact [advocacy@apldca.org](mailto:advocacy@apldca.org).

## Upcoming Events

### DWELL on Design

June 24-26 at the LA Convention Center

We will have a booth and be hosting 25 minute landscape consultations. Come and be a part of this great event.

[Click here to volunteer.](#)



John Schoustra of Greenwood Garden and members of APLD Greater Los Angeles District on a recent tour of his hilltop garden.

Learn more about the APLD Greater Los Angeles District by visiting our [Facebook page](#).

Past president Francesca Corra has just uploaded a series of beautiful photos taken by Katrina Coombs over the last six years, depicting many events and the smiling faces of even more members, touring gardens, transforming gardens, and building the movement of landscape professionals, toward the watershed approach to California landscapes.





The program for this year is well under way. One of the reasons I joined APLD was for the educational and business opportunities offered throughout the year. According to members who attended the two designer dirt sessions, they proved quite useful. Based on this, we are hoping to offer more in the future.

Both Greener Gardens tours this season have also been invaluable educational events for sustainable landscape design and green landscape practices as well as great networking opportunities with both colleagues and clients. In the upcoming months, we have several opportunities coming our way to keep improving the way we think, perceive and practice the art of landscaping, we look forward to collaborating and seeing you there.

Sincerely,  
Martin G. Carrion van Rijn  
President, APLD Sacramento District

## Upcoming Events

### APLD Sacramento District Board Meeting

*Monday, July 18, 2016; 5 PM*

Silverado Design Center, 5250 South Watt Ave  
#200, Sacramento, CA 95826, (916) 381-8711

RSVP to Gary Kernick at [info@changeofseasons.net](mailto:info@changeofseasons.net)  
or call (916) 835-6920

Sponsored by: APLD Sacramento District

### Harvest Day

APLD Sacramento District will host an Educational Table at Harvest Day: Sacramento's ultimate educational gardening event, a project of the UCCE Master Gardeners of Sacramento County. Workshops, lectures, and Water Efficient Mini-Tours will include Native Rain Gardens, and Ultra Water-Efficient Landscapes. APLD Sacramento is close to the EcoLandscape California booth.

*Saturday, August 6, 2016; 8 AM - 2 PM*

Fair Oaks Horticultural Center,  
11549 Fair Oaks Boulevard  
Fair Oaks, CA, 95628

Would you like to join other APLD members to staff the booth? Please contact Gary Kernick at [info@changeofseasons.net](mailto:info@changeofseasons.net) or call (916) 835-6920



Photo © 2016 Marti Meyer

APLD members educate the public for Greener Gardens

## Past Events

The Sacramento District held two 'Designer Dirt' sessions in local coffee shops, one in March 26th at Insight Coffee Roasters from 10am-12pm, and one April 7th at Ettorre's Restaurant and European Bakery from 5:30-7:30pm. Events Chair Gary Kernick moderated the lively gatherings. Participants discussed installation issues, plant sourcing, and swapped ideas on how to streamline business practices. It was enjoyable and useful to problem solve together. Our work can be solitary at times, so a little time with 'the Hive' can be a welcome break from routine. The sessions were also a chance for members to invite non-members to join us in a casual, relaxed setting.

—Bernadette Balics

## Elk Grove and Roseville Greener Gardens

APLD Sacramento Members participated in the Elk Grove and Roseville Greener Gardens events, sponsored by APLD Gold Sponsor Green Acres Nursery. This year, the APLD Sacramento District participated in two the April 23 Elk Grove Greener Gardens Tours and Expo and the May 14 Roseville Greener Gardens Expo with a **\$30-for-30 minutes APLD Ask A Designer Booth**. Our welcome table area was enhanced for each event with a generous loan of lush colorful plants from APLD CA Gold Sponsor, Green Acres Nursery. The public response was encouraging with booth visitors consistently asking for help with water-wise gardens, and finding what they needed, with the help of our members.

—Marti Meyer



Photo: Cheryl Buckwalter



Photo: Cheryl Buckwalter

Members of the Sacramento District offered \$30 for 30-minute consultations to attendees of the Roseville GreenerGardens Tour and DIY Expo.



Photo : Cheryl Buckwalter





It is hard to believe that almost a year has passed since the Bay Area District formed. Together, the board has continued

excellent programming for our members and the landscape profession, across a wide and diverse geographic and economic population. Your participation in irrigation workshops, advice booths, ReScape (formerly Bay Friendly), QWEL, watershed training, LED lighting programs, and advisory boards are a few ways you hone your skills to meet the demands of today's landscape profession.

From million dollar installations to budgets based on lawn conversion rebates, you know that each of your designs impacts our water supply, affects local flora and fauna, and contributes to the local economy. With millions of landscapes in the Bay Area, the impact you have on solving real world problems with style and grace seem limitless. So stay informed! Use your membership to the fullest by attending local and regional programs and sponsor events. Contribute to our California Chapter blog and take notice of all of the events and programs posted on the events calendar.

In May, we borrowed from the Southern California districts' successful Koffee Klatches with 'Our Tech Tools for Designers' program held across the Bay Area in May.

### What's Ahead

And, there is more in the works: the popular Peninsula Design Process Roundtable program will soon come to the East Bay, along with Custom Metal Fabrication for Design Accents, and Design Inspiration using Native Plant Communities. Don't miss our perennial favorite program with Wendy Proud of Gold Sponsor Mountain States Wholesale Nursery. This will be offered in two Bay

Area locations this August.

Be on the lookout for Watershed-Wise programs and training in the near future.

All of this is made possible by volunteer board members; without their commitment, programming would be curtailed. Continue your impact by volunteering to serve on the Bay Area board. You connect to other designers, develop relationships with our sponsors, and deepen your knowledge of the profession. You can start small by volunteering as a Member-at-Large, hosting a Koffee Klatch, or organizing a local program. You can start big, too, by chairing a committee, and serving on our board. Never served on a board before? Neither did I. It's a benefit of membership and another opportunity for you to learn and be on the forefront of landscape design. Curious? Just give me a call or email.

### Cheers!

Linda Middleton

*President, APLD Bay Area District*

## Did you miss our April 2016 Issue?

### Download the issue



## FEATURED EVENTS

### Drip Irrigation Workshop for Landscape Managers

The California Center for Urban Horticulture offers a Drip Irrigation Workshop for Landscape Managers at three locations, on these dates in June, 2016. For more details and registration information, please visit their [website](#).

#### In Pittsburg

*June 16, 2016 from 7:45 AM to 12:15 PM*

Pittsburg City Hall, 65 Civic Ave. Pittsburg, CA

[Download the flyer](#)

#### In Riverside

*June 21, 2016 from 8 AM to NOON*

Western Municipal Water District

14205 Meridian Parkway, Riverside, CA

[Download the flyer](#)

#### In Fountain Valley

*June 23, 2016 from 8 AM to NOON*

MWDOC office

18700 Ward Street, Fountain Valley, CA

[Download the flyer here.](#)

---

### CLCA Landscape Water Conference

*Thursday, June 23, 2016; 9 AM–3 PM*

Pleasant Hill Community Center

320 Civic Drive, Pleasant Hill, CA 94523

Cost: \$115

Earn 3 CCAM, NALP, IA, ISA CEUs

The California Landscape Contractors Association and California Association of Community Managers are pleased to present the fourth annual Bay Area Landscape Water Conference.

### CLCA Landscape Water Conference, cont...

#### 2016 Speakers & Topics

- Session 1 - Local Drought Update: Contra Costa Water District
- Session 2 - Turf Replacement Case Study: Cassidy Lundin of Terra Landscape
- Session 3 - Landscape Model Ordinance & Drought Recovery: California Landscape State Expert, Peter Estournes CLP, CWM
- Session 4 - Landscape Industry Certifications Panel, Moderated By: Tim Hendricks, CLT, of Cagwin and Dorward
- Session 5 - Formulating a Long Term Landscape Water Plan for Your HOA: Tom Sweeney CWM of Landscape Care Co.
- Session 6 - Maintaining Your Trees Care on a Limited Water Budget: Igor Lacan of UCUH

[Register Online](#)

---

### Life in the Soil from Dr. Elaine Ingham

Dr. Elaine Ingham is offering a series of online and Hands-On courses. Please click on the course titles below for more information.

#### Life in the Soil Online Class

*July 7, 2016–September 8, 2016*

Register by June 23, 2016 to enjoy a \$500 discount for "Life in the Soil."

#### Practical Training at the Celebration Farm

Practical Hands-On 5 Day Training

(Prerequisite is that all four online classes are completed. See website for more details.)

*July 18 - 22 or Sept. 19 - 23*



### Garden Life: Art, Flowers, and Food

*Saturday June 18, 2016; 8:30 AM–5 PM*

Marin Art & Garden Center, Ross, California  
Sponsored by Pacific Horticulture Society.

#### Register Here

Join Pacific Horticulture and the Marin Art & Garden Center (MAGC) for a day of inspiration as we explore the many gifts of the midsummer garden. Celebrate the season and a garden-based life with a day of lectures and workshops with local artists, growers, and designers held indoors and out on the beautiful grounds at MAGC.

Pacific Horticulture editor, Lorene Edwards Forkner and MAGC executive director, Antonia Adezio, will moderate the day.

#### Among the featured speakers are:

##### Stefani Bittner, “Designing a Garden Life”

Join Stefani for a discussion on how to translate the current homesteading movement to your own garden, beautifully. Make your garden work for you by including plants that provide a year round harvest, composting sources including compost bins, worms, and backyard chickens, and how to grow your own organic fertilizer. Stefani Bittner is co-owner of Homestead Design Collective and co-author of Beautiful Edible Landscapes

##### Janet Sluis, “Powerhouse Plants”

Janet has shopped the world to identify plants that thrive with less water and less work. Through slides and live plants, Janet will introduce her garden favorites with a focus on colorful blooms, year-round interest, and providing a healthy natural habitat to create a beautiful resilient landscape. Janet Sluis is a horticulturist with the Sunset Western Garden Collection (APLD CA Bronze Sponsor), with more than 20 years experience in plant production and a family history in horticulture.

### MWELO and the New Normal for the California Landscape

PG&E Pacific Energy Center  
851 Howard Street  
San Francisco, CA 94105

*June 29, 2016, 8:30 AM–4:30 PM*

The updated California Water Efficient Landscape Ordinance (WELO) is now in effect throughout the state. Did you know that the new WELO:

- affects all new permitted landscape construction over 500 square feet,
- includes new requirements for irrigation equipment,
- significantly reduces applied water allowances,
- and requires compost on all projects?

Join StopWaste and PG&E for a free, one-day workshop on the new WELO. Speakers include:

- a representative from DWR,
- a landscape contractor,
- a landscape architect,
- a compost expert,
- and an irrigation expert.

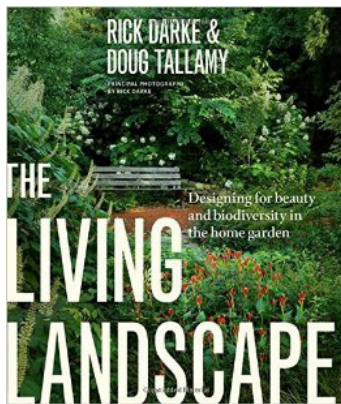
The workshop will be a combination of lecture and hands-on exercises, giving attendees a thorough understanding of what’s required by ordinance and how to comply with it.

For more information, [click here](#).

*This training is being developed through a partnership between PG&E and StopWaste and is free to the public.*

**Visit our website at [www.apldca.org](http://www.apldca.org)  
for events in California and beyond.**

# BOOK REVIEW

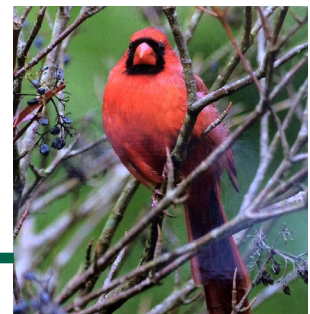


## The Living Landscape: Designing for Beauty and Biodiversity in the Home Garden

By Rick Darke and Doug Tallamy

Many gardeners today want a home landscape that nourishes and fosters wildlife. But they also want beauty, a space for the kids to play, privacy, and maybe even a vegetable patch. Sure, it's a tall order, but *The Living Landscape* shows how to do it. By combining the insights of two outstanding authors, it offers a model that anyone can follow. Inspired by its examples, you'll learn the strategies for making and maintaining a diverse, layered landscape—one that offers beauty on many levels, provides outdoor rooms and turf areas for children and pets, incorporates fragrance and edible plants, and provides cover, shelter, and sustenance for wildlife. Richly illustrated with superb photographs and informed by both a keen eye for design and an understanding of how healthy ecologies work, *The Living Landscape* will enable you to create a garden that is full of life and that fulfills both human needs and the needs of wildlife communities.

**\$ 28.54 Hardcover** Amazon Books



Charts at the back of the book outline ecological functions and landscape functions of many plants, organized by the region of the country where they grow.

This is an excellent reference and an inspiration for thinking about the landscapes you design in a more sustainable way. The authors encourage designers to consider the ecological functions of each plant as well as how they work in the landscape. The emphasis is on layering—on filling every garden niche just as Nature does. Although the book features gardens in the Mid-Atlantic states, and the photos reflect that—those of us on the West Coast can still find the approaches in this book useful. The chart in the back has a section on Southwest plants which can be useful in California.

—Diane Goldsmith



# Opportunity Board



**Peninsula Building Materials Co.**

APLD CA Gold Sponsor, Peninsula Building Materials Co., seeks a Showroom Sales Associate to provide expert product knowledge, selection assistance and customer service.

The Showroom Sales Associate increases sales, market share, company profitability and customer satisfaction by working with customers, contractors, architects, designers (and their clients) in choosing from a wide variety of natural or cultured stone, brick or related building material product. For more details about this opportunity, please [click here](#).

## Precision Property Measurement: Opportunities in Long Beach and the San Francisco Bay Area

Are you interested in becoming a measuring and drafting expert, and helping architects to create beautiful spaces by providing them with accurate and reliable building information? Precision Property Measurement has opportunities in two locations. For a detailed position description, please [click here](#).

Meadowbrook Design is seeking an inspired Residential Landscape Designer for leading Bay Area firm.

Design candidate is a team player that loves to learn. Is enthusiastic about design and shows organizational skills. Candidate possesses a great attitude, is intuitive, detail oriented, and accurate. Has the ability to work independently and is adaptable to the fluidity in residential landscape design.

Ideal candidate will have both a firm grasp in CAD skills and be motivated to expand their talent in Residential Landscape Design with emphasis on plant material.

Personality and energy are both important qualities for consideration, as a good fit is essential to the work environment. Integrity and punctuality is a must.

Qualifications: Proficiency in

- CAD graphic skills
- 3D and Sketch Up knowledge a plus
- Must know or be willing to learn Vectorworks
- Hand drawn perspectives essential
- 1 to 2 years Residential Design required

[Meadowbrookdesign@comcast.net](mailto:Meadowbrookdesign@comcast.net)

## Are you tired of doing site measures alone?

I can help you! I am an undergrad in landscape architecture at the University of Oregon, home in the East Bay for my summer break. I have extensive experience as a "measuring assistant" and am willing to work with landscape designers to create accurate base sheets, including spot elevations (I have a Zip Level).

I've assisted landscape designer Mary Fisher (my mom) over the last several years and am eager to help other designers. Please contact me if you'd like to learn more about my skills and how I can help you.

Maggie Elias  
[maggiejelias@gmail.com](mailto:maggiejelias@gmail.com)

# APLD Advocates for a Watershed Approach to California Landscapes

*Continued from page 3...*

One of our next steps is participate in an ITP recommended a stakeholder group, made up of landscape professionals

Of all changes to the report, we are most proud of the substitution of the words “landscape professional” for “landscapers”. This word—“landscaper”—no longer holds meaning, and it represents a simplistic, misinformed description in a broad and diverse field. Yes, many of the public still operate in this realm.

We got some, but not all of what we asked for, and we made much progress toward a mutual understanding of the challenges and opportunities all industry players face in this time of change. In my mind, nature is a generous and flexible ally, and when we invest in the soil, everything else happens naturally. We can help lead this movement. Why not try?

## ITP Report to the Legislature on Landscape Water Use Efficiency

### APLD CA comments on the draft report



Photo: Maureen Decombe

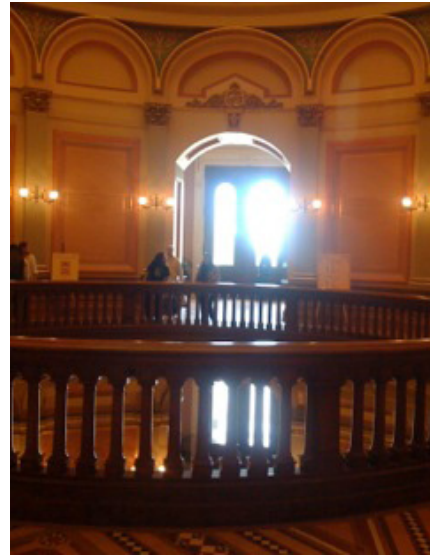


Photo: Maureen Decombe

### Assembly Bill 2525 and Senate Bill 1294

Soon after the ITP adjourned, two bills offered an immediate opportunity to join with other partners to support inclusion of “watershed approach” standards.

### **Assembly Bill 2525 - Water Efficient Landscaping**

### **Senate Bill 1294 - The Community Climate and Drought Resilience Program of 2016**

Working closely with our partners at Surfrider Foundation’s Ocean-Friendly Gardens Program, and our Gold Sponsor, G3, Green Gardens Group, we proposed language to include the watershed approach, then signed on as supporters of AB2525. This legislation is also endorsed by ReScape California, EcoLandscape California, the Sierra Club, and sponsored by the California Association of Local Conservation Corps. See the President’s Message from Mary Fisher, AP LD, for a recap of an informational briefing held at the State Capitol in May, to describe the benefits of the watershed approach.

Each bill easily passed through various committees, and both are currently in the Appropriations Committee. Do we know whether they will ultimately be funded and passed in a tough budget year? It is too soon to tell. Regardless of the outcome in 2016, we are keen on pushing for these standards until they are adopted for all landscape-related legislation, and the standards become ubiquitous, especially for rebate or tax incentive programs.



## Public Education and the “New Normal”

Local agencies have recognized the value our members and all green industry colleagues can bring to develop and deliver quality community education and programs.

At our January board meeting, we polled our leadership, and were astounded by the impact we already have. Agencies and education organizations have begun to recognize our members as we help them realize their public outreach goals and metrics. We participate in programs for water savings, waste reduction, and pollution prevention, and more. As we delve into this further by surveying you, our members, we hope to quantify information about how you participate in local and statewide community education programs in California.

As we build more partnerships, we want to recognize and include all of the programs our members support. Look for our survey in August of 2016. As we prepare for new legislation to be introduced for 2017, we intend to document the impact our members have on public and professional education.

## Professional Training and Qualification

APLD professional membership categories require the completion and tracking of continuing education units. This boon to professionalism in our ranks is supported by the ongoing and long-standing educational programming and professional development focus of our organization and members.

Advocacy “for” a cause that aligns with our core values, such as our Watershed Approach Campaign, means we are finally having the conversation needed to clarify the role, rights, and responsibilities of all of our members in California. If you are interested in learning more about our advocacy efforts, and participating in our next steps, please contact advocacy chair Amelia Lima, APLD.

— Maureen Decombe

*Maureen is a past president of the APLD California Chapter, and currently serves as our Administrative and*



## A Message from Amelia

My passion for advocacy has two angles. The first is the empowering feeling that one experiences when living in a true democracy, where the voices of the common citizens are heard. APLD members that have had the opportunity to visit the Capitol during our advocacy meetings in Sacramento have experienced this.

The second aspect is my belief that educated landscape designers can impact and make positive changes to our environment. Whenever I have a chance to visit gardens created by our members, I see rainwater used as a resource, appropriate plant materials, and the use of mulch—all practices that embody the watershed approach.

As we interact with local and state agencies to realize our goals for a new way to garden and landscape in California, we have gained recognition as a group of educated professionals, concerned about the environment and the impacts climate change and drought have had in our gardens.

The time has come to change the status quo for designed environments in California, and APLD designers are indispensable to achieve this change.

--Amelia Lima, APLD

*Amelia is a past president of the APLD California Chapter, and founding member of the APLD San Diego District. Amelia currently serves as our Advocacy Chair.*

**The June 2016  
APLD California Chapter Newsletter  
was produced with contributions from:**

**Mary Fisher, APLD  
Francesca Corra, APLD  
Diane Goldsmith  
Linda Middleton, APLD  
Laura Morton, APLD  
Jacky Surber  
Jodie Cook  
Kimberly Alexander**

**Hope Nelson  
Maureen Decombe  
Martin Carrion van Rijn  
Cheryl Buckwalter  
Marti Meyer  
Bernadette Balics  
Lisa Bellora  
David Clarke, APLD**

**Newsletter Coordinator:  
Maureen Decombe**

**Graphics Coordinator:  
Diane Goldsmith**